



Beautiful Wood Finishes



Appearance

Longevity

Value

Environment



Your Wood Care Resource



Since 1981, Perma-Chink Systems, Inc. has developed a comprehensive system of products designed for the unique needs of wood homes. Our finishes, sealants, restoration products and preservatives are designed to work together to cover all phases of home beautification, protection, and maintenance.

We take pride in the enhanced natural beauty our products offer the homeowner. Our products look better, last longer and are easier to use than anything on the market today.

Our System of Products has dramatically reduced the expense and effort of maintaining a natural wood home. Superior products and an unparalleled commitment to customer service have made Perma-Chink Systems the industry leader in the appearance and maintenance of natural wood homes.



The Wood Home Care and Maintenance Authority™

Quality Products

For over three decades Perma-Chink Systems, Inc. has manufactured the highest quality products and supplies specifically formulated for natural wood homes. We are committed to using only the best ingredients and most advanced technology available. All of our products have been subjected to rigorous and extensive laboratory and real-world testing. Thousands of customer testimonials confirm that the quality of our products have made us an industry leader in the natural wood home market.

Customer Service

Our commitment to customer service begins the first time you give us a call. During business hours, a product support specialist, not a machine, will greet you. Our team members are highly trained to assist you in all aspects of beautifying and maintaining your home. We are the manufacturer, we can answer even the most technical questions regarding our **System of Products**. We'll give you the guidance, information and product samples necessary to make informed decisions about your project. We can also help you find friendly professional contractors in your area, if necessary.

Experience

Perma-Chink Systems, Inc. is a systems company. No other log home related company offers the broad spectrum of products that we do. We have put together a family of products that work together and complement each other. Our technical department has spent many years developing products that work, are safe to use and are compatible with one another. That's why it's so important to use our system rather than individually purchasing one or two of our products. We've stayed abreast of the latest polymer technologies resulting in better performance, increased beauty and easier application of our systems which has kept us ahead of our competitors. All of us at Perma-Chink Systems believe that we owe it to our customers to provide the best products incorporating the very latest technical developments.

Locations

You can visit any of our fully stocked retail stores or distributor outlets located across the United States, Canada and Europe for sales and product support. You may also call any of our toll-free numbers or contact us via our website, www.permachink.com. We will arrange prompt delivery to your doorstep or jobsite.

- Nationwide network of retail outlets
- Toll-free access
- Jobsite delivery
- Professional, experienced specialists
- Natural wood homes are our only business
- Secure and convenient internet shopping
- MADE in USA



1-800-548-3554

www.permachink.com



Table of Contents

Sequence of Events	3
Exterior Stains and Finishes	
Lifeline Ultra-7	5
Lifeline Accents	6
Lifeline Ultra-2	7
Lifeline Exterior	8
Lifeline Advance	9
Log End Seal	10
UV Boost	10
Prelude	10
Lifeline Endure Deck Finish	11
Interior Stains and Finishes	
Why Use Lifeline?	13
Lifeline Interior	15
Lifeline Acrylic Gloss/Satin	17
Sure Shine	17
Chinking and Specialty Sealants	
Sealants Overview	18
Perma-Chink	19
Chink-Paint	20
Caulking Guns and Accessories	20
Energy Seal	21
Woodsman	22
Log Home Gasket Tape	22
Check Mate 2	23
Trowels and Spatulas	23
Grip Strip	25
Backer Rod	25
Preservatives	
Armor-Guard	26
Cobra Rods	26
Shell-Guard Concentrate	26
Shell-Guard RTU	27
Wood Cleaners and Strippers	
Log Wash	29
Oxcon	30
Wood ReNew	30
pH Strips	30
Smart Strip	31
S-100	31
Wood Restoration Epoxies	
M-Balm and E-Wood	32
Fasteners	
Log Boss	33
Wood Shapers	
Blaster Buddy	35
Osborn, Sanding Disks	35
Wood Grinding Disks	35
Locations	37



Color in this photo closely represents Lifeline Interior, Light Natural. Actual results will vary. Contact Perma-Chink Systems for samples.

STRONGWOOD LOG
HOMES

Sequence of Events

Exterior

Sequence of Events When Restoring an Existing Home

1. Repair rot spots, damage, etc.
2. *Energy Seal* around windows, doors, butt joints, and between logs. Allow to cure one week. This will help prevent water or blasting media from getting inside the home.
3. Clean or strip off the old finish. Rinse thoroughly and allow wood to dry. If media blasted, wash surface with *Log Wash* solution.
4. Borate treatment (optional). Allow to dry.
5. If more than 7 days have passed since step 3 or 4, wash down surface with a *Log Wash* solution. Rinse well and allow wood to dry.
6. *Energy Seal* areas where water or media entered home. Apply *Check Mate 2* to cracks and checks. Allow *Energy Seal* and *Check Mate 2* to cure at least 3 hours before staining.
7. If blasted, apply *Prelude* clear wood primer before *Lifeline* stain. If pressure washed, apply *Lifeline* stain.
8. Repair, restore chinking if applicable.
9. Apply *Log End Seal*, *Chink-Paint*.
10. Apply *Lifeline Advance* gloss or satin topcoat.

Sequence of Events for New Construction

1. Recommend sanding decking with 60 or 80 grit sand paper prior to cleaning.
2. Clean home to remove dirt, brown stain, and mill glaze. If gray wood is present use *Wood ReNew*. If gray wood is not present use *Log Wash*. Rinse thoroughly and allow wood to dry.
3. Borate treatment (recommended). Allow wood to dry.
4. Apply *Energy Seal* and *Check Mate 2*. Allow to cure at least 3 hours.
5. If more than 7 days have passed since step 1 or 2, wash down surface with a *Log Wash* solution. Rinse well and allow wood to dry.
6. Apply *Lifeline* stain.
7. Chink home if applicable.
8. Apply *Log End Seal*.
9. Apply *Lifeline Advance* gloss or satin topcoat.



Professional Referrals



Training Seminars



In-house Workshops



Personal Web Training

Low VOC one coat

LIFELINE
ULTRA - 7

- Appearance
- Longevity
- Value
- Environment



When visual allure is matched by
remarkable performance.

Lifeline Ultra-7™



Our Highest Performance One Coat Stain for Walls and Decks

Lifeline Ultra-7 is our highest quality one coat wood stain enhanced with advanced polymer resin that delivers sophisticated color, unmatched durability and maximum coverage.

Appearance:

By choosing *Lifeline Ultra-7*, you are ensuring that the finish will look as beautiful years after application as it did the second day it was applied.

Longevity:

After multiple exposure tests in harsh-weather areas across the country, *Lifeline Ultra-7* stands out as THE top-of-the-line, long-lasting finish.

Value:

There is no doubt that *Lifeline Ultra-7* will save you time and money in the long run. Lasting longer equates to less labor expense over the life of the finish.

Environment:

Low VOC , water-based *Lifeline Ultra-7* meets and exceeds all standards and environmental requirements in North America.

- High coverage rate
- Excellent UV protection
- Easy maintenance procedures
- Breathable film allows unseasoned logs to dry out
- For walls and decks
- Comes with a 5-year warranty for vertical surfaces
- Compatible with all *Perma-Chink Systems* wood care products
- Clear coat with *Lifeline Advance* to complete the system



Caramel, #325



Cedar, #385



Oak, #332



Bronze, #374



Chestnut, #365



Almond, #345



Smoke, #363

Application techniques, wood species and other factors will affect the actual color when finished. We supply samples for evaluation on your specific wood.



Surface Preparation:
Must be applied to clean, dry surface.

Application Rates:
One coat - 300-400 sq.ft. per gallon.

Application Temperature:
40° F to 90° F

Application Methods:
Airless sprayer.
Brush.

of Coats:
One coat application.
Topcoat with Advance Gloss or Satin Clear Topcoat.

Drying Time:
Dry to the touch in 4 to 6 hours.
Cures in 72 hours.

Clean up:
Soap and water.

Packaging:
1 gallon container.
5 gallon pail.
Samples available.

Storage/ Shelf Life:
Freeze/thaw stable.
1 year.



Lifeline Accents™

Inspired Collection of Transparent Stains for Interiors and Exteriors

Lifeline Accents is our newest two-coat color finish developed to make your home look fashionable. *Lifeline Accents*, influenced by global trends, encouraged us to provide our customers with exciting new colors and style.

The new colors create a wonderful accent for your wood trim, interior and exterior walls, millwork, timber, furniture and other wood elements of your home.



- High coverage rate
- Clear coat with *Lifeline Advance* to complete the system for exterior and *Acrylic Gloss/Satin* or *Sure Shine* for interior
- Excellent UV protection
- Low maintenance
- Long lasting color retention



Pickled White, #762



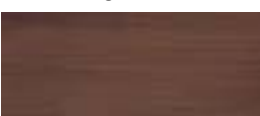
Evergreen, #770



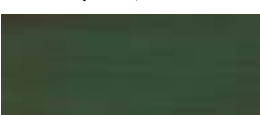
Spruce, #766



Midnight, #714



Espresso, #746



Jade, #774



Fern, #782



Azure, #718



Bordeaux, #738



Black Walnut, #742



Gamet, #726



Cinnabar, #730



Bam Red, #734



Newport, #722



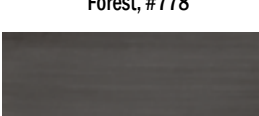
Sand, #754



Umber, #758



Forest, #778



Charcoal, #750

Surface Preparation:
Must be applied to clean, dry surface.

Application Rates:
1st coat - 350-450 sq.ft. per gallon.
2nd coat - 600-800 sq.ft. per gallon.

Application Temperature:
40° F to 90° F

Application Methods:
Airless sprayer.
Brush.

of Coats:
For Exterior
Two coat application.
Topcoat with Advance Gloss or Satin Clear Topcoat.

of Coats:
For Interior
One or two coat application.
Topcoat with Acrylic Gloss/Satin Clear Topcoat or Sure Shine Gloss or Satin.

Drying Time:
Dry to the touch in 2 to 4 hours.
Cures in 72 hours.

Clean up:
Soap and water.

Packaging:
1 gallon container.
Samples available.

Storage/Shelf Life:
Freeze/thaw stable.
1 year.



Lifeline Ultra-2™

Our Best Selling, Highest Performance Exterior Wall Stain

No other transparent finish system lasts as long as *Lifeline Ultra-2* with a clear topcoat of *Lifeline Advance*. It is so durable that it is covered by a 5-year limited warranty. This advanced waterborne formula enriches the look of natural wood grain and protects against damaging UV from the sun.

Homeowners and contractors appreciate just how easy it is to apply with an airless sprayer or brush. Remember – not all waterborne stains are created equal. Call us and get a free sample of *Lifeline Ultra-2* and see for yourself.

- Unparalleled UV protection
- Lowest maintenance of any exterior finish
- Breathable film allows unseasoned logs to dry out
- High coverage rates
- Superior color retention
- Clear coat with *Lifeline Advance*
- Environmentally friendly



Satterwhite Log Homes

Surface Preparation:
Must be applied to clean, dry surface.

Application Rates:
1st coat - 350-450 sq.ft. per gallon.
2nd coat - 600-800 sq.ft. per gallon.

Application Temperature:
40° F to 90° F

Application Methods:
Airless sprayer.
Brush.

of Coats:
Two coat application.
Topcoat with Advance Gloss or Satin Clear Topcoat.

Drying Time:
Dry to the touch in 2 to 4 hours.
Cures in 72 hours.

Clean up:
Soap and water.

Packaging:
1 gallon container.
5 gallon pail.
Samples available.

Storage/Shelf Life:
Freeze/thaw stable.
1 year.



Butternut, #854



Autumn Gold, #815



Dark Honey, #822



Oak, #832



Wheat, #821



Natural, #880



Dark Natural, #830



Sequoia, #835



Hazelnut, #870



Cedar, #885



Bronze, #874



Chestnut, #868



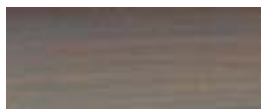
Walnut, #865



Driftwood, #861



Stone Gray, #863



Gentry Gray, #842

Application techniques, wood species and other factors will affect the actual color when finished. We supply samples for evaluation on your specific wood.

Lifeline Exterior™

Our Value Priced Exterior Wall Stain

Our original exterior wall formula has been updated and improved for over 20 years. *Lifeline Exterior* forms a thin film at the surface of logs where the protection is needed.

Its breathability and flexibility allows logs to go through seasonal expansion and contraction while drying out to their core. Apply a clear topcoat of *Lifeline Advance* to maximize durability and minimize maintenance cost and labor.

- Clear coat with *Lifeline Advance* to complete the system
- Excellent UV protection
- Easy application and maintenance
- Breathable film allows logs to dry out
- High coverage rates
- Long lasting color retention
- Dries fast to allow two coat application the same day
- Environmentally friendly
- Compatible with all *Perma-Chink Systems* wood care products



Honest Abe Log Homes

PURDY®,
WOOSTER®,
STAINER®
Brushes



STAY CLEAN™

Add an extra measure of protection against surface mold by adding *Stay Clean* to the final topcoat.



Surface Preparation:
Must be applied to clean, dry surface.

Application Rates:
1st coat - 350-450 sq.ft. per gallon.
2nd coat - 600-800 sq.ft. per gallon.

Application Temperature:
40° F to 90° F

Application Methods:
Airless sprayer.
Brush.

of Coats:
Two coats application.
Topcoat with Advance Gloss or Satin Clear Topcoat.

Drying Time:
Dry to the touch in 2 to 4 hours.
Cures in 72 hours.

Clean up:
Soap and water.

Packaging:
1 gallon container.
5 gallon pail.
Samples available.

Storage/ Shelf Life:
Freeze/thaw stable.
1 year.



 Butternut #154	 Dark Honey #122	 Dark Natural #130
 Hazelnut #170	 Cinnamon #174	 Walnut #165
 Driftwood #161	 Stone Gray #163	 Gentry Gray #142

Application techniques, wood species and other factors will affect the actual color when finished. We supply samples for evaluation on your specific wood.

Lifeline Advance™

Clear Topcoat - the Second Component of Our Exterior Finish System

Lifeline Advance works just like the clear-coat on your car to protect the color coat underneath. It extends the life of the finish system while adding depth and highlights to the appearance. It makes your exterior walls easier to keep clean.

Lifeline Advance has the right permeability to keep the film breathable while repelling water.

Lifeline Advance is the second component in our exterior wall finish system that includes a limited warranty when used with *Lifeline Ultra-2* and *Lifeline Ultra-7*.



Blue Ridge Log Cabins



Hearthstone Log Homes

Surface Preparation:
Must be applied to clean, dry surface.

Application Rates:
800-1000 sq. ft. per gallon over LIFELINE color coats.

Application Temperature:
40° F to 90° F

Application Methods:
Airless sprayer.
Brush.

of Coats:
One or two coats application over LIFELINE stain.

Drying Time:
Dry to the touch in 2 to 4 hours.
Cures in 72 hours.

Clean up:
Soap and water.

Packaging:
1 gallon container.
5 gallon pail.
Samples available.

Storage/ Shelf Life:
Freeze/thaw stable.
1 year.



Satin Gloss

- Satin or Gloss finish
- Simplifies and reduces maintenance of your exterior finish
- Significantly extends the life of the finish system
- Adds depth and luster to appearance
- Extremely high coverage
- Breathable to allow logs to dry out
- Environmentally friendly
- Only for use over *Lifeline Ultra-2*, *Lifeline Ultra-7*, *Lifeline Exterior* or *Lifeline Accents*



Log End Seal™

Protect Exposed End-Grain from the Elements

Surface Preparation:
Must be applied to clean, dry surface.
Sand log ends before applying Lifeline stain.

Application Rates:
30 to 40 sq.ft. per gallon. One gallon will coat approx. 180 six inch diameter log ends or 100 eight inch diameter log ends.

Application Temperature:
40° F to 90° F

Application Methods:
Paint pad or sponge.
Short bristled brush.

of Coats:
One coat application.

Drying Time:
Dry to the touch in 2 to 4 hours.

Clean up:
Soap and water.

Packaging:
1 gallon container.

Storage/Shelf Life:
DO NOT FREEZE!
1 year.

The end-grain of wood is particularly vulnerable to sun, rain, snow and ice, which can lead to excessive cracks and checks. End-grain can also act like tiny straws, drawing excessive moisture into the wood. *Log End Seal* provides a durable, water-repellent barrier against these problems before they begin.



Goes on white and dries clear



Prelude™

A Clear Primer for Porous Wood Surfaces

One coat of *Prelude* Clear Wood Primer fills the pores of the wood and provides a surface that enables you to obtain a more uniform finish color over the entire home.

Prelude Clear Wood Primer also contains *UV Boost* for added UV protection. *Prelude* is a primer and should never be used as a final finish.

Surface Preparation:
Must be applied to clean, dry surface.

Application Rates:
200 to 400 sq.ft. per gallon depending on the porosity of the wood.

Application Temperature:
40° F to 90° F

Application Methods:
Airless sprayer.
Brush. Backbrush to ensure even coverage.

of Coats:
One coat application.

Drying Time:
Dry to the touch in 2 to 4 hours.
Cures in 72 hours.

Clean up:
Soap and water.

Packaging:
1 gallon container.
5 gallon pail.
Samples available.

Storage/Shelf Life:
Freeze/thaw stable.
1 year.



Not sealed with Prelude Sealed with Prelude



UV Boost™

Additional Protection for High Sun Exposure Areas

The addition of *UV Boost* to the first coat of any of our other finishes imparts additional protection against fading and graying. It is especially useful in interior finishes to reduce the “picture frame” effect on walls and carpeted floors. Since *UV Boost* must be in contact with bare wood for it to be effective, it only needs to be added to the first coat of finish.

Note: *Lifeline Ultra-2*, *Lifeline Ultra-7* and *Prelude* already contain *UV Boost*.



Container Sizes

For adding to one gallon and five gallons of finish.

Lifeline Endure™

One-Coat Exterior Deck Finish

Our one-coat deck coating comes in 5 colors that complement our exterior wall finishes. Easy maintenance and high durability in a water based deck finish! Use *Lifeline Endure* for wood decks and other exterior horizontal surfaces as well as railings, posts and trim. Maintenance coats can be applied as necessary or just touch up worn spots on stair steps and high traffic areas. If your deck is in a very high UV exposure location, additional *UV Boost* can be added to increase durability.

To keep your deck looking great as well as helping to extend the life of the finish, give it wash-down with *Log Wash* a couple of times a year.



Pecan #920



Spruce #930



Cherry #940



Mesquite #950



Cape Cod #960

Application techniques, wood species and other factors will affect the actual color when finished. We supply samples for evaluation on your specific wood.



- Excellent UV protection
- One coat for easy application and maintenance
- Breathable film allows decking to dry out
- High coverage rates
- Long lasting color retention
- Environmentally friendly. Complies with the most stringent VOC regulations!
- Compatible with all *Perma-Chink Systems* wood care products

Surface Preparation:
Must be applied to clean, dry surface.

Application Rates:
One coat - 300-400 sq.ft. per gallon.
Please refer to product label for application instructions.

Application Temperature:
40° F to 90° F

Application Methods:
Airless sprayer.
Brush.
Pad.

of Coats:
One coat.

Drying Time:
Dry to the touch in 2 to 4 hours.
Cures in 72 hours.

Clean up:
Soap and water.

Packaging:
1 gallon container.
5 gallon pail.
Samples available.

Storage/Shelf Life:
Freeze/thaw stable.
1 year.





JACK FROST LOG HOMES
Color in this photo closely represents Lifeline Ultra-2 Dark Natural. Actual results will vary. Contact Perma-Chink Systems for samples.

Why Use Lifeline™ Stain and Clear Coats?

The Systems Approach to Log Home Care:

Appearance

Lifeline highlights the grain and texture of your wood. Lifeline clear coats add depth to the surface and offer you a choice of just how much gloss you would like on the finish. Your house looks as good as a fine piece of furniture.

Value

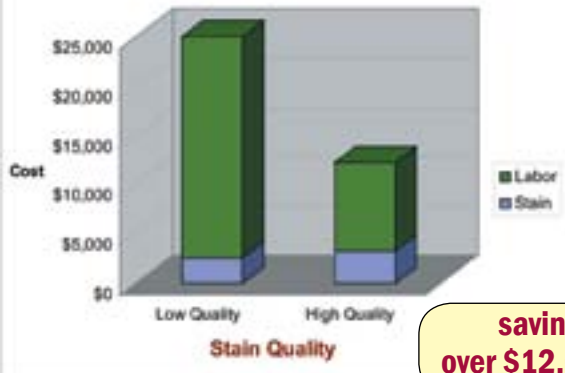
No other stain gives you more for your money. All Lifeline finishes are formulated to provide maximum coverage to lower your cost for the job as compared to common stains that require much more material for your job. Remember to compare coverage rates to make an accurate comparison for your material costs.

Longevity

Perma-Chink Systems has tested over 60 different finishes from more than 20 manufacturers. Lifeline Ultra-2 with Lifeline Advance clear topcoat has outlasted every one of those finishes in side-by-side comparisons on test walls. Our formulations use components that are individually specialized for their function. Among many other differences, our clear-coats are not just clear Lifeline; they are a completely different formulation that performs better than a simple clear version of the color coat.



Cost Over 10-year Period



Do the math and get the greatest value for your time!

It's no surprise that high-quality products from Perma-Chink Systems' extensive collection of exterior stains and finishes will result in spending less time and money protecting and maintaining your log home over the years.

Environment

Lifeline is now, and has always been easy on the environment. Water based, extremely low VOC and low odor during drying. After it is dry, it has no odor, so it is demanded by many of our customers who have chemical sensitivities. Your tools clean up with just soap and water. It just cannot get any easier.



Color in this photo closely represents Lifeline Interior Light Natural. Actual results will vary. Contact Perma-Chink Systems for samples.

STRONGWOOD LOG HOMES

Lifeline Interior™

Interior Stain for Walls, Ceilings and Other Surfaces

Accent the beauty of all your interior wood and seal out household odors and contaminants. *Lifeline Interior* can be used as a color coat or sealing coat on walls when you want to apply an interior clear-coat for additional protection or luster. Interior finishes make log walls easy to clean.

Lifeline Interior breathes to allow trapped moisture to evaporate from logs.

To reduce the “picture frame effect” in sun-exposed locations add *UV Boost* to the first coat of *Lifeline Interior*.

Lifeline Interior will not yellow. You can apply multiple coats to develop the color and film thickness that you desire. *Lifeline Interior* is completely compatible with our other interior finish options.

- Long lasting interior color coat
- Transparent color choices
- One or more color coats maximize your interior color choices
- Easy application and maintenance
- High coverage rates
- Fast drying
- Very low VOC formula
- Compatible with all *Perma-Chink Systems* wood care products

We provide free samples of all our finishes



	
Clear #110	Butternut #154
	
Light Honey #112	Dark Honey #122
	
Light Natural #120	Dark Natural #130
	
Hazelnut #170	Cinnamon #174
	
Driftwood #161	Walnut #165
	
Stone Gray #163	Gentry Gray #142

Application techniques, wood species and other factors will affect the actual color when finished. We supply samples for evaluation on your specific wood.

Surface Preparation:
Must be applied to clean, dry surface.

Application Rates:
1st coat - 350-450 sq.ft. per gallon.
2nd coat - 600-800 sq.ft. per gallon.

Application Temperature:
40° F to 90° F

Application Methods:
Airless sprayer.
Brush.


of Coats:
One or more coats depending on the desired color. Stir container every 15 minutes. Backbrush and maintain a wet edge. Topcoat with Acrylic Clear Topcoat or Sure Shine.

Drying Time:
Dry to the touch in 1 to 4 hours. Cures in 72 hours.

Clean up:
Soap and water.

Packaging:
1 gallon container.
5 gallon pail.
Samples available.

Storage/Shelf Life:
Freeze/thaw stable.
1 year.





Color in this photo closely represents Lifeline Interior Dark Natural. Actual results will vary. Contact Perma-Chink Systems for samples.

Sure Shine™

Gloss/Satin Premium Waterborne Polyurethane Finish

Sure Shine is our most durable indoor clear finish. It is suitable for all your wood floors and any other interior surface where you want a lustrous or deep-shine finish.

If you want a deep, clear finish using fewer coats, *Sure Shine* premium finish is the one to use!

Since it is water based and fast drying, multiple coats can be applied in a single day. *Sure Shine* can be used to re-coat older oil-based floor finishes. *Sure Shine* cures to a smooth, hard surface that resists scuffing and abrasion. It prevents discolorations from water and most household cleaners and chemicals.

- Easy application and maintenance
- High coverage rates
- Fast drying
- Very low VOC formula
- Compatible with all *Perma-Chink Systems* wood care products
- Environmentally friendly
- Free samples

Surface Preparation:
Must be applied to clean, dry surface.

Application Rates:
350-450 sq. ft. per gallon on bare wood (1st coat)
600-800 sq. ft. per gallon on finished wood (2nd coat)
700-900 sq. ft. per gallon on subsequent coats (3rd coat).

Application Temperature:
40° F to 90° F

Application Methods:
Airless sprayer.
Brush.

of Coats:
One to multiple coats depending on desired film thickness.

Drying Time:
Dry to the touch in 2 to 4 hours.
Cures in 72 hours.

Clean up:
Soap and water.

Packaging:
1 gallon container.
5 gallon pail.
Samples available.

Storage/Shelf Life:
Freeze/thaw stable.
1 year.



Lifeline Acrylic™

Gloss/Satin Clear Topcoat for Interior Millwork and Walls

Lifeline Acrylic is a furniture grade clear coat for interior use. *Lifeline Acrylic* forms an attractive and durable protective film that adds depth to the finish and makes cleaning wood surfaces a breeze. It can be applied over *Lifeline Interior*, *Lifeline Accents*, *Prelude* or directly onto bare wood.

Surface Preparation:
Must be applied to clean, dry surface.

Application Rates:
350-450 sq. ft. per gallon on bare wood (1st coat)
600-800 sq. ft. per gallon on finished wood (2nd coat)
700-900 sq. ft. per gallon on subsequent coats (3rd coat).

Application Temperature:
40° F to 90° F

Application Methods:
Airless sprayer.
Brush.

of Coats:
One to multiple coats depending on desired film thickness.

Drying Time:
Dry to the touch in 2 to 4 hours.
Cures in 72 hours.

Clean up:
Soap and water.

Packaging:
1 gallon container.
5 gallon pail.
Samples available.

Storage/Shelf Life:
Freeze/thaw stable.
1 year.



- Easy application
- High coverage rates
- Fast drying
- Very low VOC formula
- Compatible with all *Perma-Chink Systems* wood care products
- Environmentally friendly
- Free samples



Sealants Overview

Permanently Seal and Protect Your Log or Timber Home

“Chinking” is a term descended from Old English to describe the sealing of gaps and joinery around the interior and exterior of your home. These gaps can allow air and water infiltration and must be properly sealed. A major benefit of a well sealed home is much better energy efficiency and comfort.

Accept No Substitutes

In 1981 we invented synthetic Chinking as a permanent solution for sealing and protecting your home. Today, as thousands of satisfied customers can attest, there simply is no substitute for Sealant Systems manufactured by *Perma-Chink Systems*.

Highest-Quality Ingredients

All our sealants are specially formulated with premium acrylic latex. We never skimp on quality, which is why our sealants consistently outperform all competitive products.

Versatile Sealant Systems

We’ve developed ideal solutions for sealing gaps in and around your custom home. *Perma-Chink* will seal wide gaps and is textured to simulate mortar. *Energy Seal* is ideal for sealing narrow gaps and is formulated to blend in with the surrounding finish system.

Protecting your Dream Home

Air and water infiltration are a threat to your greatest asset – your natural wood home. You’ll appreciate the peace of mind that can only come from using our Sealant Systems.

Virtually Maintenance-Free

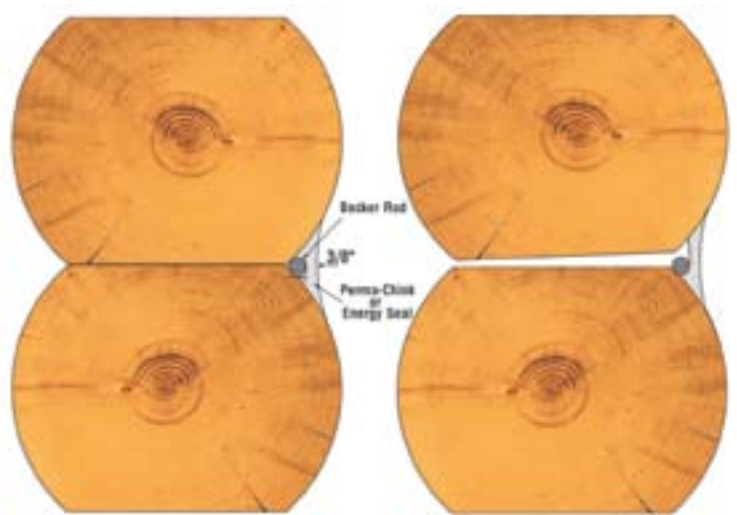
We’ve single-handedly reduced the cost and effort of maintaining your natural wood home. You can look forward to decades of performance from all of our quality sealants.



Backed by a 10-year Warranty

We are so confident in our *Perma-Chink* sealant that we back it with a full 10-year warranty. Properly installed *Perma-Chink* will not tear and or delaminate from the surrounding wood for decades to come.

Our Sealant Systems used with our Exterior Finish Systems, offer the lowest maintenance solution to beautify and protect your log or timber home. Contact a *Perma-Chink Systems* product support specialist today for color samples and application guidelines.



Perma-Chink®

The Original Synthetic Chinking for Log Homes

Perma-Chink log home sealant started the company and remains the product for which we are known, even though we have developed a complete system of products for log home care and maintenance. *Perma-Chink* looks like traditional mortar. It stretches, compresses and tightly adheres to wood surfaces to make your log walls weather tight and attractive. It is still the easiest chinking to apply to your log home.



- Highly elastic
- Use for interior and exterior sealing
- Seals gaps 1 inch or wider
- Maintenance free
- Very low VOC formula
- 10-year warranty
- Compatible with all *Perma-Chink Systems* wood care products

Perma-Chink Coverage Rates

Gap Width	Linear Feet per Pail
1/2"	Use Energy Seal
3/4"	Use Energy Seal
1"	385'
1-1/2"	256'
2"	192'
2-1/2"	154'
3"	127'
3-1/2"	110'
4"	96'
4-1/2"	85'
5"	76'
6"	63.5'

1 Pail = approximately fifty five 11 oz. tubes

1 Pail = approximately twenty 30 oz. tubes



White #207



Stone #211



Light Gray #212



Medium Gray #224



Sandstone #215



Beige #216



Tan #219



Brown #223

Surface Preparation:
Must be clean and dry and free of oils and wax. Proper backing materials and/or bond breaker must be used.

Application Rates:
See coverage rate table.

Application Temperature:
40° F to 90° F

Application Methods:
Chink Pump.
Bulk loading gun.
Caulk gun.
Application bags.

of Coats:
Apply at 3/8" thickness. Do not apply in direct, hot sunlight.

Drying Time:
Skins over in 20 minutes. Complete curing may take 3 to 8 weeks depending on temperature and humidity.

Clean up:
Soap and water.

Packaging:
11 oz. tubes.
30 oz. tubes.
5 gallon pail.

Storage/Shelf Life:
Freeze/thaw stable.
1 year.



Color representations are as close as possible to actual colors. Application techniques and other factors will affect the actual color when finished. We supply samples for evaluation.

Chink-Paint™

Change or Renew the Color of Your Chinking

Chink-Paint is a high quality latex paint that is textured to look like Perma-Chink log home sealant. Chink-Paint can be used to renew or completely change the color of existing chinking. On cosmetic chink joints less than ¼ inches deep Chink-Paint can be used to give the home a traditional chinking look. Chink-Paint is available in the same eight colors as Perma-Chink log home sealant.



Linear Feet per Gallon

- 2” joint - 600 feet
- 3” joint - 400 feet
- 4” joint - 300 feet



Surface Preparation:
Surface of wood or existing chinking must be clean and dry.

Application Rates:
100 sq.ft. per gallon.

Application Temperature:
40° F to 90° F

Application Methods:
Short bristled brush.

of Coats:
1 coat.

Drying Time:
1 hour.

Clean up:
Soap and water.

Packaging:
1 gallon pail.
5 gallon pail.

Storage/Shelf Life:
DO NOT FREEZE!
1 year.



Caulking Guns and Accessories

The Cox bulk loading caulking gun is our most popular tool for applying Perma-Chink or Energy Seal. Cox caulking guns are aluminum for light weight and will not rust. They have a high mechanical advantage to reduce fatigue when you are using them and adapt from bulk loading to use with 11 oz. cartridges. Cox guns come with three cone shaped tips that can be cut to your individual needs.



The Follow Plate makes bulk loading much easier and cleaner.

Energy Seal™

Specialty Sealant for Log Homes

Energy Seal is specially formulated for sealing narrow gaps in log home joinery such as butt joints, window trim, door trim and corners.

It is lightly textured to match wood surfaces for applications where you would like the sealant to be invisible. Energy Seal accepts stain colors and blends into the surface of wood joinery.

- Highly elastic
- For use in gaps up to 1 inch wide
- Maintenance free
- Very low VOC formula
- Soap and water cleanup
- Compatible with all Perma-Chink Systems wood care products



Surface Preparation:
Must be clean and dry and free of oils and wax. Use Backer Rod wherever possible.

Application Rates:
See coverage rate table.

Application Temperature:
40° F to 90° F

Application Methods:
Chink Pump.
Bulk loading gun.
Caulk gun.
Application bags.

of Coats:
Apply at 3/8" thickness. Do not apply in direct, hot sunlight.

Drying Time:
Skins over in 20 minutes. Complete curing may take 3 to 8 weeks depending on temperatures and humidity.

Clean up:
Soap and water.

Packaging:
11 oz. tubes.
30 oz. tubes.
5 gallon pail.

Storage/Shelf Life:
Freeze/thaw stable.
1 year.



Energy Seal Coverage Rates

To be applied 5/16" - 3/8" thickness			
Width of gap	Feet per 11-oz. tube	Feet per 30-oz. tube	Feet per Pail
1/2"	16'	48'	975'
3/4"	11'	32'	650'
1"	8'	24'	490'



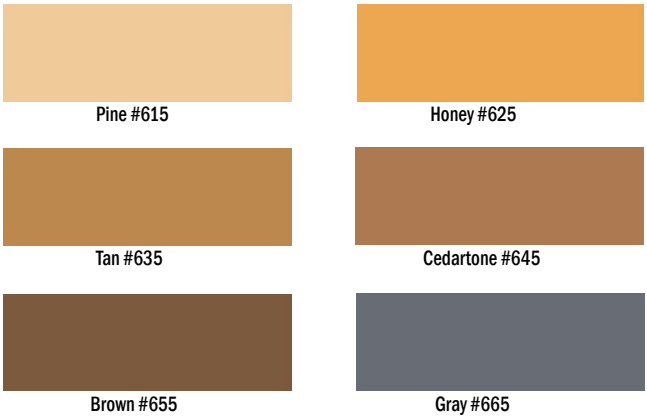
Color representations are as close as possible to actual colors. Application techniques and other factors will affect the actual color when finished. We supply samples for evaluation on your specific wood.

Woodsman™

A Smooth Surfaced Log and Timber Home Sealant

Woodsman is a high performance, elastic sealant for general use around your house. It can be used during construction between logs, in butt-joints, around windows and doors, woodwork, eaves, soffits, vents and expansion joints. It cures to form a highly stretchable seal that is UV resistant, water-tight and air-tight. It is durable and available in a variety of colors.

Woodsman tightly adheres to all materials, including wood, metal, glass, concrete, brick, masonry, porcelain, tile, marble, glass and plastics; and stretches to maintain a tight seal.



Surface Preparation:
Must be clean and dry and free of oils and wax. Use Backer Rod wherever possible.

Application Rates:
See coverage rate table.

Application Temperature:
40° F to 90° F

Application Methods:
Caulk gun.

of Coats:
Apply at 3/8" thickness. Do not apply in direct, hot sunlight.



Drying Time:
Skins over in 20 minutes. Complete curing may take 3 to 8 weeks depending on temperatures and humidity.

Clean up:
Soap and water.

Packaging:
11 oz. tubes.
30 oz. tubes.

Storage/Shelf Life:
Freeze/thaw stable.
1 year.

Woodsman Coverage Rates

Diameter of Bead	feet per 11-oz. tube	feet per 30-oz. tube
1/4"	32'	92'
3/8"	14'	41'
1/2"	8'	23'

Log Home Gasket Tape

- Closed-cell, medium density PVC foam.
- Pressure sensitive adhesive.
- Maintains a uniform seal between logs.
- Pliable between -5° F and 170° F.

3/8 inch, roll of 25 feet (40 rolls/case)
1/2 inch, roll of 25 feet (30 rolls/case)
1 inch, roll of 25 feet (15 rolls/case)



Check Mate 2®

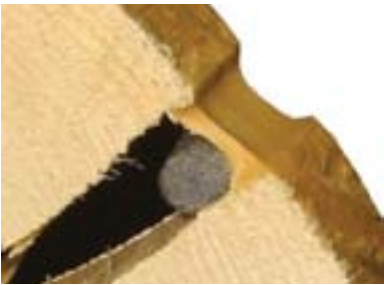
Seals Cracks and Checks in Logs

Protect your logs from water infiltration by sealing upward facing checks and cracks that can develop along log surfaces.

Check Mate 2 is specially formulated to complement the colors of our Lifeline finishes.



Color representations are as close as possible to actual colors. Application techniques and other factors will affect the actual color when finished. We supply samples for evaluation on your specific wood.



Clean up:
Soap and water.

Packaging:
11 oz. tubes.

Storage/Shelf Life:
Freeze/thaw stable.
1 year.



Surface Preparation:
Surface of checks must be clean and dry and free from any oils or wax. Use Backer Rod wherever possible.

Application Rates:
One 11 oz. tube will seal 16 feet of 1/2 inch wide or 32 feet of 1/4 inch wide checks.

Application Temperature:
40° F to 90° F

Application Methods:
Caulk gun.

of Coats:
Apply at 3/8" thickness. Do not apply in direct, hot sunlight.

Drying Time:
Skins over in 1 hour. Complete curing may take several days depending on temperatures and humidity.

Trowels and Spatulas

We stock a wide selection of quality trowels and spatulas used for tooling Perma-Chink, Energy Seal, Check Mate 2 and Woodsman.

Available Sizes:

Straight Spatulas
Blade Width and Length:
2" x 14"
1-1/2" x 10"
1-1/4" x 8"
1-1/4" x 6"
3/4" x 4"

Bent Spatulas
Blade Width and Length:
1-1/2" x 10"
1-1/4" x 8"
3/4" x 5" (tapered)
3/4" x 4 1/2"

Bent Trowels
Blade Width:
4"
3"
2"
1-1/2"
1-1/4"



Chinking and Specialty Sealants

Interior & Exterior



COUNTRY CLASSIC LOG HOMES

Color in this photo closely represents Lifeline Interior Light Natural. Actual results will vary. Contact Perma-Chink Systems for samples.



Chinking and Specialty Sealants

Interior & Exterior

Grip Strip™

Backing Materials and Bond Breakers

Grip Strip is chemically inert closed-cell polyethylene that is shaped to fit between log courses to form a flat surface for the application of *Perma-Chink* or *Energy Seal*. This makes it easier to maintain a consistent thickness of sealant across the seam, reducing the amount of sealant required and improving the sealant's performance.

Advantages of Using Grip Strip

- It provides a firm chinking or caulking surface
- Its shape and texture allow it to be easily installed without using staples, nails or glue
- It repels water. (Most open cell products absorb water)
- It's compatible with all commonly available synthetic chinking
- It helps prevent blistering of chinking surfaces
- It provides extra insulation against heat loss



Width Sizes

3/4 inch	1200'	per Case
1 inch	960'	per Case
1-1/4 inches	600'	per Case
1-1/2 inches	460'	per Case
2 inches	360'	per Case
3 inches	200'	per Case
4 inches	144'	per Case
5 inches	120'	per Case
6 inches	96'	per Case



Backer Rod™

Backing Materials and Bond Breakers

Backer Rod is extruded closed-cell polyethylene rod that is used in cracks, checks and gaps before filling them with sealants such as *Perma-Chink*, *Energy Seal* and *Check Mate 2*. Caulk joints should not be more than 3/8" thick and *Backer Rod* provides a way to fill a deep crevice or gap while maintaining the proper sealant thickness for maximum performance.

Backer Rod should also be used in checks over 1/4" wide before applying *Check Mate 2*.



- Closed cell polyethylene.
- Will not absorb water.
- Heat and cold stable.
- Should be used to assure proper thickness of sealants including *Perma-Chink*, *Energy Seal* and *Check Mate 2*.

Width Sizes

1/4 inch	6400'	per Case
3/8 inch	3600'	per Case
1/2 inch	2500'	per Case
3/4 inch	1100'	per Case
1 inch	550'	per Case

Handy-Pak Sizes

1/4 inch	2500'	per Case
3/8 inch	1400'	per Case
1/2 inch	800'	per Case

Armor-Guard®

Soluble Borate Powder

Armor-Guard is a borate powder that is dissolved in water for use. Add *Armor-Guard* to water in pail or bucket, stir until the solution is clear and apply with a low pressure sprayer. *Armor-Guard* protects uninfested wood from wood decay and wood destroying insects.

Like all borate treatments, exterior surfaces should be protected with one of our *Lifeline* exterior finish systems. *Armor-Guard* stays near the surface and we recommend that it be reapplied if the finish system is physically or chemically removed.



Surface Preparation:
Must be applied to clean and dry bare wood.

Application Rates:
Approx. 200 sq.ft. per gallon of mixed solution. A 17 lb. pail covers approx. 3400 sq.ft.

Application Temperature:
40° F to 90° F

Application Methods:
Low pressure sprayer.
Drill and inject.

of Coats:
1 coat application. Mix 1 pound (4 cups or 2 of the enclosed scoops) of powder with one gallon water for use.

Drying Time:
1 to 3 days.

Clean up:
Soap and water.

Packaging:
1 lb. bag.
17 lb. pail.

Storage/Shelf Life:
Keep dry.
5 years.

Shell-Guard®

Borate Wood Preservative Concentrate

Shell-Guard Concentrate is a combination of glycols and borate that must be mixed with an equal volume of water for use. The diluted solution is applied to bare wood and impregnates the wood fibers with the active borate ingredient eliminating and providing protection against wood decay fungi and wood consuming insects.

Like all borate-based wood preservatives the diluted *Shell-Guard* solution must be applied to unfinished bare wood. One application of diluted *Shell-Guard Concentrate* is permanent when exterior wood surfaces remain protected with one of our *Lifeline* exterior finish systems.



Surface Preparation:
Must be applied to clean and dry bare wood.

Application Rates:
1 gallon of *diluted solution* to 108 sq.ft. of wood surface.
1 gallon of *concentrate* covers 215 sq.ft. of wood surface.

Application Temperature:
40° F to 90° F

Application Methods:
Low pressure sprayer.
Drill and inject.

of Coats:
1 coat application.
Mix 1:1 with warm water for use.

Drying Time:
2 to 3 weeks. Wash surface with *Log Wash* before applying finish.

Clean up:
Soap and water.

Packaging:
1 gallon container.
2.5 gallon container.
5 gallon carton.

Storage/Shelf Life:
Freeze/thaw stable.
5 years.

Shell-Guard® RTU

Ready-To-Use Wood Preservative

Borates are recognized as being the most effective “green” wood preservatives that are available. *Shell-Guard RTU* is a ready-to-use borate/glycol wood preservative that is colorless, odorless and has a very low toxicity to people and pets. It is effective for preventing and eliminating wood decay and wood destroying insect infestations in exterior and interior wood members.

Shell-Guard RTU must be applied to bare wood for it to work. Although most borate products must be dissolved in water prior to use, *Shell-Guard RTU* is ready-to-use so you can pour it right out of the container into your low pressure sprayer without the fuss of measuring,

mixing and stirring. And if you have any left over you can pour right back into the container for later use.

Another advantage to *Shell-Guard RTU* is its quick drying time. Your logs will be ready to finish one to three days after it’s applied. Since it penetrates into the wood, one application of *Shell-Guard RTU* is permanent when exterior wood surfaces remain protected with one of our *Lifeline* exterior finish systems. *Shell-Guard RTU* is labeled for the control of termites, wood boring beetles, carpenter ants and wood decay fungi.



Surface Preparation:
Must be applied to clean and dry bare wood.

Application Rates:
1 gallon will cover 150 to 250 sq.ft. of wood surface.

Application Temperature:
40° F to 90° F

Application Methods:
Low pressure sprayer.
Drill and inject.

of Coats:
1 coat application.

Drying Time:
1 to 3 days.

Clean up:
Soap and water.

Packaging:
1 gallon container.
2.5 gallon container.
5 gallon carton.

Storage/Shelf Life:
Store in heated area.
2 years.



Cobra™ Rods

Cobra Rods are used to spot treat decay prone areas such as log ends that are coated with a finish. Once inserted into damp or wet wood the borate / copper complex in *Cobra Rods* dissolves spreading the active ingredients into areas surrounding the rod. This eliminates active decay fungi and helps prevent rot for 8 to 10 years.

Cobra Rods are 7/16” in diameter and 2” long. The installation holes may be plugged with the accompanying plastic plugs and hidden with *Energy Seal*. A typical six to eight inch round log end will require two 2” long *Cobra Rods* inserted within 4 inches of the butt end.



Cobra™ Rods are a trademark of Genics Inc., Canada



	Shell-Guard RTU	Shell-Guard Concentrate	Armor-Guard
Mixing	No mixing required.	Mix 1 to 1 with water.	Mix 1 lb. per gallon of water.
Washing	Not required.	Wash down after 2 weeks.	Not required.
Duration of Treatment	Permanent treatment.	Permanent treatment.	Should be reapplied if home is stripped.
Limitations	Not for sale in California or Canada	None.	Should be used only on new uninfested wood. Not for sale in Canada

Wood Cleaners and Strippers

Interior & Exterior



Color in this photo closely represents Lifeline Ultra-2 Natural. Actual results will vary. Contact Perma-Chink Systems for samples.



Wood Cleaners and Strippers

Interior & Exterior

Log Wash™

A Liquid Concentrate for Cleaning and Conditioning Bare Wood Surface and Exterior Lifeline Finishes



Blue Ridge Log Cabins
Color in this photo closely represents Lifeline Ultra-2 Oak

Cleaning Bare Wood

Log Wash is the best product to use for cleaning all bare wood surfaces. Its low pH formula is compatible with the chemistry of wood which prevents unwanted reactions that can darken or discolor bare wood surfaces.

Besides removing dirt, dust, mold, pollen and sanding and blasting media residue, *Log Wash* will remove many types of bare wood discolorations including brown chemical stains. We strongly recommend that all bare wood surfaces be washed and conditioned with a *Log Wash* solution before applying any of our finish systems.



Before



After

Maintenance Cleaning

Use *Log Wash* for washing the dust and dirt off interior and exterior finished wood surfaces. Its unique formulation removes dust, dirt and other contaminants from walls and chinking without harming them. Washing your home once or twice a year with *Log Wash* will keep your *Lifeline* finish looking great and will help extend its life.

Surface Preparation:
Use *Log Wash* instead of bleach for cleaning wood surfaces.

Application Rates:
150 to 250 sq.ft. per gallon of diluted *Log Wash*.

Maintenance Cleaning:
1 cup per gallon of water. 1 gallon of concentrate cleans approx. 3400 sq.ft.

Cleaning Bare Wood:
2 cups per gallon of water. 1 gallon of *Log Wash* concentrate cleans approx. 1700 sq.ft.

Application Temperature:
40° F to 90° F

Application Methods:
Low pressure sprayer.

of Coats:
Use 1 cup per gallon for maintenance cleaning. Use 2 cups per gallon for cleaning bare wood.

Drying Time:
Never allow to dry on wall.

Clean up:
Water.

Packaging:
1 gallon container.

Storage/Shelf Life:
Freeze/thaw stable.
1 year.



Wood ReNew™

Oxcon™

S-100™

Smart Strip™

Renews the Natural Beauty of Bare Wood

Concentrate Oxalic Acid Solution

An Environmentally Friendly Finish Remover

Professional Grade Finish Remover

Wood ReNew is a cleaning concentrate for use on bare wood surfaces. A safe, effective cleaner it is the best product to use for removing UV damaged gray wood fibers.

Wood ReNew will also help remove old worn finishes, mill glaze, mold, mildew and dirt from wood surfaces. Wood ReNew is not a maintenance cleaner for cleaning finished surfaces.

One gallon of Wood ReNew makes 20 gallons of solution, enough to clean approximately 3000 sq. ft. of wood surface.

Surface Preparation:
Use Wood ReNew to help remove grayed wood fibers, mill glaze, mold and mildew.

Application Rates:
Add 4 cups of Wood ReNew to 5 gallons of water. Each gallon of mixed solution will clean approx. 150 sq.ft. of wood surface.

1 gallon container of Wood Renew will clean approx. 3000 sq.ft.

Application Temperature:
40° F to 90° F

Application Methods:
Sponge.
Scrub brush.
Mop.

of Coats:
As needed. Works best if used along with a pressure washer. Thoroughly rinse.

Drying Time:
Never allow to dry on wall.

Clean up:
Water.

Packaging:
1 gallon container.
Samples available.

Storage/Shelf Life:
Freeze/thaw stable.
5 years.



Oxcon is the only product that will remove dark colored streaks from metallic tannates. It must be diluted with four parts water for use. Oxcon solution will remove rust stains caused by nails, screws and fasteners.

Use Oxcon only when needed. We recommend the use of pH Strips to verify that the surface has been adequately rinsed after using any cleaning product.

Surface Preparation:
Clean surface with Log Wash before using Oxcon.

Application Rates:
200 sq.ft. per gallon of mixed solution. One gallon of Oxcon makes 5 gallons of mixed solution and cleans approx. 1000 sq.ft.

Application Temperature:
40° F to 90° F

Application Methods:
Low pressure sprayer.

of Coats:
1 application. Thoroughly rinse. Use pH strips to assure adequate rinsing.

Drying Time:
Never allow to dry on wall.

Clean up:
Water.

Packaging:
1 gallon container.
5 gallon pail.
Samples available.

Storage/Shelf Life:
DO NOT FREEZE!
6 months.




pH Strips

A Note About Rinsing

No matter what product you use to clean bare wood, nothing is more important than making sure you have adequately rinsed the surface. Any chemical residue remaining on the wood can have serious consequences later on.


We always recommend using pH Strips to make sure that the surface of the wood has been sufficiently rinsed, preferably to a pH of between 6.5 and 7.5.

Take the guesswork out of rinsing cleaners and strippers by using pH strips.




S-100 Finish Remover is an easy to use water-based solvent that removes most types of oil and water-based finishes. S-100 is a gel that can be applied with a brush or an airless sprayer. Once the existing finish has softened a pressure washer is required to remove the finish. The high water solubility of S-100 makes it easy to clean up. Since it is biodegradable there is no concern about contaminating the surrounding soil.

Unlike sodium or potassium hydroxide strippers, S-100 will not darken nor discolor the wood. S-100 may not be effective for removing some high performance coatings that may require a more aggressive chemical finish remover such as Smart Strip. We strongly recommend that you obtain and test free samples of both S-100 and Smart Strip before placing an order.



Use Smart Strip and a pressure washer to remove the most stubborn finishes. Its organic formula is pH neutral, contains no caustic or harsh chemicals and is biodegradable.

Smart Strip may be applied with a brush or airless sprayer. If using an airless sprayer contact a Perma-Chink Systems location for additional information. Smart Strip will not darken or discolor the wood. As with the use of all finish removers and wood cleaners it is of utmost importance to thoroughly rinse the surface once the finish is removed.



Surface Preparation:
None.

Application Rates:
50 to 100 sq.ft. per gallon.

Application Temperature:
50° F to 90° F

Application Methods:
Brush.
Roller.
Airless sprayer.


of Coats:
As needed.


Drying Time:
Do not allow to dry on wall.

Clean up:
Water.

Packaging:
5 gallon pails.
Samples available.

Storage/Shelf Life:
Freeze/thaw stable.
1 year.





M-Balm™

Epoxy Wood Consolidator

Wood that has lost its integrity due to decay or insects can be hardened and consolidated with *M-Balm*. This two-component liquid epoxy penetrates into soft, porous or spongy wood to form a strong water-resistant mass. *M-Balm* should always be used in preparation for filling pockets of decayed wood with *E-Wood* epoxy putty.

- Two component liquid epoxy
- Low viscosity for penetration into soft, spongy and porous wood
- Forms a hard, water-resistant mass
- Should be used prior to filling pockets of decayed wood with *E-Wood*

Surface Preparation:
Apply only to dry wood.

Application Rates:
15 to 20 sq.in. per ounce of mixed M-Balm.

Application Temperature:
40° F to 90° F

Application Methods:
Squeeze bottle.
Syringe.
Small brush.

of Coats:
Thoroughly saturate wood.

Drying Time:
Do not allow to dry on wall.

Clean up:
Uncured mixed M-Balm (Part A and Part B) may be cleaned up with white vinegar then flushed with water.

Packaging:
2 component 24 oz. package.
2 component 1.5 gallon package.

Storage/Shelf Life:
Freeze/thaw stable.
1 year.



Applying M-Balm



Wood fibers consolidated with M-Balm



E-Wood™

Epoxy Wood Filler

For filling voids in decayed wood, *E-Wood* is the perfect product to use. *E-Wood* is a two component epoxy wood putty that may be used to fill in wood voids. It can be textured to match the appearance of the surrounding wood. Hardened *E-Wood* filler can be sanded, shaped and stained.

- Two component wood tone epoxy putty
- May be shaped, molded and textured to match the surrounding wood
- Soft or decayed wood should be consolidated with *M-Balm* first
- Hardens within 24 hours

Surface Preparation:
Should be applied after using M-Balm. No waiting is necessary.

Application Rates:
1.8 cubic inches per ounce mixed A&B components.

Application Temperature:
40° F to 90° F

Application Methods:
Press into voids using gloved hands.

of Coats:
Tool and texture within 30 minutes of application.

Drying Time:
Hardens in 2 to 4 hours depending on temperature.

Clean up:
Uncured mixed E-Wood (Part A and Part B) may be cleaned up with white vinegar then flushed with water.

Packaging:
2 component 32 oz. package.
2 component 2 gallon package.

Storage/Shelf Life:
Freeze/thaw stable.
1 year.



Cavity filled with E-Wood



Stain applied to E-Wood

Contractor References

We can refer you to friendly professional contractors in your area who use and recommend our products.



Log Boss™

Fasteners for Log Homes

Log Boss™ is the fastener with maximum holding power and superior strength. *Log Boss* is specifically designed for log and timber structures.

The 3” long thread provides the grip necessary for pulling even the most difficult logs into place while the larger shank diameter increases the overall strength and pulling power.

Length available:
6”, 7”, 8”, 9”, 10”, 11”, 12”, 13”, 14”, 15”, 16”
(Call for information about other available lengths)
Packages includes one 5/16” hex head driver.



Wing Advantages

The wings clear out the splinters created by the thread as the fastener pulls down into the wood.

Features:

- No pre-drilling required
- No washer needed. Drive it one time and forget it!
- Flat head design easily counter-sinks with maximum pulling power
- The wing reduces torque required to drive the screw
- Coated for minimum friction and corrosion protection
- Made in USA



We also offer a complete line of wood-to-wood code approved fasteners for decks, ledger boards, and large timber applications.

Wood Shapers

Interior & Exterior



HEARTHSTONE LOG HOMES

Color in this photo closely represents Lifeline Exterior Driftwood. Actual results will vary. Contact Perma-Chink Systems for samples.

Wood Shapers

Interior & Exterior

Blaster Buddy™

Finish Removal System

- Requires an industrial size air compressor (at least 125 cfm at 90 psi)
- Comes with 50 feet of hose, safety line and personal protection equipment
- Available for purchase or rent

New Age Blast Media made from recycled glass is available in 50lb bag and covers approx. 75-200 sq. feet of wood surface.



Osborn™

Buffing Brushes

- Requires a buffer or polisher with 5/8 x 11 NC threads
- Nylon fibers impregnated with *Ultra Grit* abrasive
- Long lasting

Available Sizes:

Cup brush	6" diameter, 80 grit.
Cup brush	6" diameter, 120 grit
Cup brush	4" diameter, 80 grit
Cup brush	4" diameter, 120 grit



Sanding Disks and Holders



A corresponding diameter sanding disk holder is required for use.

Available Sizes:

Available in diameters of 4", 5" and 7" in coarse, medium and fine grit.



Wood Grinding Disks

Available Sizes:

- **Wood Monster**, 7" diameter disk, medium texture.
- **Wood Shark**, 4" diameter cup shape, coarse or medium texture.
- **Wood Shark**, 4" diameter dish shape, coarse or medium texture.



- Requires an appropriate size angle grinder for use
- Ideal for removing decayed or unwanted wood
- Long lasting



7" Wood Monster

4" Wood Shark
Dish Shape



Color in this photo closely represents Lifeline Interior Dark Natural. Actual results will vary. Contact Perma-Chink Systems for samples.



Payment Terms and Conditions

Forms of Payment:
We accept MASTERCARD, VISA, DISCOVER and AMERICAN EXPRESS. On approved credit, terms are net 30 from date of invoice.

Shipping:
We ship to your jobsite. Most orders are shipped within 24 hours. Substantial freight discounts may occur on shipments weighing 200 pounds or more.

Terms:
Prices and product availability are subject to change without notice. Seller not responsible for consequential damages. All returns require an advance return authorization number (RAN) and will be subject to a 15% restocking charge.

For delivery to your doorstep or additional information contact Perma-Chink Systems, Inc. at the following locations:

Tennessee “Eastern Division”:
1605 Prosser Road, Knoxville, TN 37914
(800) 548-3554

Tennessee, Sevierville
1357 Dolly Parton Parkway, Sevierville, TN 37862
(800) 548-3554

Washington “Western Division”:
17635 N.E. 67th. Ct., Redmond, WA 98052
(800) 548-1231

Montana:
3112 Highway 93 North, Stevensville, MT 59870
(800) 479-7090

Colorado:
1960 Airport Road, Rifle, CO 81650
(800) 433-8781

Minnesota:
12632 Fromelt Loop NW, Rice, MN 56367
(877) 244-6548

Pennsylvania:
7174 Shavers Creek Road, Petersburg, PA 16669
(800) 257-4864



SHOP ONLINE

Perma-Chink Systems, Inc. Distributors:

Indiana:
Log Home Center and Supply
16907 Mystic Rd., Noblesville, IN 46060
(800) 773-6223
www.loghomecenter.com

Michigan:
Timeless Wood Care Products
6528 Schamber Drive, Muskegon, MI 49444
(800) 564-2987
www.timelesswoodcare.com

Pennsylvania:
Hess Log Home Supplies
7174 Shavers Creek Road, Petersburg, PA 16669
(800) 257-4864
www.hessloghomesupplies.com

Central & Eastern Canada:
Canadian Log Home Supply
R.R.2 (21 Sand Rd.), Eganville, ON K0J 1T0
(800) 746-7773
www.canadianloghomesupply.com

Slovenija in bivše države SFRJ:
PTK, Tilen Kokelj, s.p.
Miševa ulica 8, SI-1230 Domžale, SLOVENIJA
Tel.: 00386 (0)41 305 777
www.ptk.si info@ptk.si





www.permachink.com

1-800-548-3554

Rev 3/12

DO IT RIGHT THE FIRST TIME
with
LIFELINE[™] ULTRA



PRESERVE YOUR HOME FOR GENERATIONS TO COME!